



STARTER

KIT FOR BEGINNER

LAST UPDATE : JULY 2020

Welcome within the Pioneers community!



Your greenhouse is now installed and operational.

This welcome kit brings you, day after day, all the information essential to the use of the material to start with serenity.

- A maintenance schedule.
- Our recommendations to help the development of your crops in bioponics or aquaponics.
- Information sheets to lead the water cycling phase of your basins.

You will receive by email your access to the collaboration platform and your credentials to access your data.

You can already consult our online documentation and our YouTube channel: techniques and vertical culture and permaculture will soon have no secret for you.



Link to our YouTube videos:

<https://wiki.myfood.eu/docs/nos-tutos>



Link to the online documentation:

<https://wiki.myfood.eu/docs>

Do not hesitate to contact us if necessary, our team is at your service

By mail: support@myfood.eu

By phone: 00 33 3 67 37 00 56

MAINTENANCE CALENDAR

DAILY

- Feed the fish
- Water your seedlings and beds
- Check that the plants do not drip on each other
- Check that the plants are in good health (appearance of the plants, colors, deficiencies, parasitic insects, presence of odium)
- Consult the myfoodhub app and monitor the indicators, check that the water is flowing normally
- Remove solid residues from the pond (uneaten food, waste, algae)
- Put pellets in the stove in winter
- Ensure temperature and humidity in summer (open / close doors, shade cloth, water gravel to increase humidity)

WEEKLY

- Prune the plants (tomatoes, etc.) and remove the dead leaves
- Plant and harvest in ZipGrow Towers and permaculture beds
- Fill food vending machines
- Clean the filter and the sieve (siphoning, foam cleaning)
- Check the water level and fill the basins
- Perform a strip test (ammonia, nitrates, etc.) during the cycling period
- Empty the ash pan and clean the burner of the pellet stove
- Share your results with the community

BI-MONTHLY TO MONTHLY

- Add culture supplements

EVERY 2 MONTHS

- Clean the probes gently with a cloth
- Clean the inside of the radial filter with a water jet

EVERY YEARS

- Have the stove serviced by a professional

COMPLEMENTS OF CULTURE RECOMMENDATIONS

BIOPONICS



In order to make the most of your greenhouse, some minerals must be brought to the water of your tanks. We offer organic fertilizer solutions to bring these elements to your plantations and thus benefit from optimal use of your greenhouse. The following dosages have been developed by our agronomists.

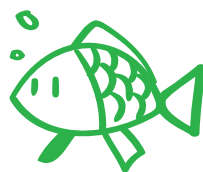
Tips:

- You can put the fertilizer solutions directly into your ponds.
- Be sure to mix well before use.
- The cycling period lasts from 6 to 8 weeks.

	CYCLING PERIOD Day 1	CYCLING PERIOD DAY 14
AMMONIUM SULFATE	50g (family) / 8 g (city)	

BIOSEVIA FERTILIZER SOLUTION	DOMINANT LEAF VEGETABLES	DOMINANT VEGETABLES FRUITS	
	GROW	GROW	BLOOM
SPRING - Every 3 weeks	300 ml (family) 100 ml (city)	150 ml (family) 50 ml (city)	150 ml (family) 50 ml (city)
SUMMER - Every 2 weeks			
AUTOMN - Every 3 weeks			
WINTER - Every 2 months			

COMPLEMENTS OF CULTURE RECOMMENDATIONS AQUAPONICS



In order to make the most of your greenhouse, some minerals in addition to fish droppings must be brought to the water of your tanks.

We offer mineral supplements of natural origin to bring these elements to your plantations and thus benefit from optimal production through the seasons. The following dosages have been developed by our agronomists.

Tips:

- Do not put salts directly in the water of your ponds.
- It is best to dilute them until complete disappearance of the crystals in 2 to 3 liters of warm water.
- Also be careful not to mix water and salts by hand but rather with a tool.

	CYCLING PERIOD Day 1	CYCLING PERIOD Day 14
AMMONIUM SULFATE	50 g (family) / 8 g (city)	

	SPRING-SUMMER from March to October Every 2 weeks	AUTUMN WINTER FROM OCTOBER TO MARCH EVERY 4 WEEKS
CALCIUM CHLORIDE	100 ml (family) / 50 ml (city)	
POTASSIUM SULFATE	150 g (family) / 50 g (city)	
MAGNESIUM SULFATE	150 g (family) / 50 g (city)	
CHELATE OF IRON	3 g (family) / 1 g (city)	
MICRO-NUTRIENTS	3 g (family) / 1 g (city)	

SAFETY

INSTRUCTIONS 1/2

INTRODUCTION

! BEFORE COMMISSIONING, PLEASE READ THE MANUAL CAREFULLY TO FAMILIARISE YOURSELF WITH YOUR GREENHOUSE.

- It is imperative to observe the safety instructions to ensure correct and safe operation.
- For safety reasons, the use of the greenhouse is prohibited:
 - to any child or adolescent under 16 years old.
 - to anyone who is not able to assess the potential risks
 - to any person who is not yet familiar with the operating instructions

Please keep these operating instructions in a safe place. In the event of a change of ownership, it is essential that these documents are handed over with the greenhouse. Please report any problem with the operation of the greenhouse immediately.

INSTALLATION

As a reminder, the installation of the greenhouse as well as any electrical connection inside or outside the greenhouse must be carried out by an authorized professional. Any modification made to the product or to the electrical installation could result in the loss of the commercial guarantee.

Myfood accepts no responsibility for any accident resulting from improper use of the greenhouse. Myfood cannot be held liable for any risks and damage resulting from any accident relating to the use of the greenhouse.

USE

The greenhouse is designed for the breeding of fish and the production of vegetables, fruits and herbs. The use of this greenhouse is prohibited for any other use than that indicated in this brochure.

Myfood declines all responsibility for poisoning due to improper operation of the system or the use of food or products not indicated or recommended in this guide.

SAFETY INSTRUCTIONS

ATTENTION: THE USE OF THIS GREENHOUSE IS ONLY ALLOWED IF THE ELECTRICAL INSTALLATION MEETS THE LEGAL STANDARDS.

IN CASE OF DOUBT, PLEASE CONTACT MYFOOD TEAM OR A PROFESSIONAL.

- The pump must never be operated when people are in contact with the pond water.
- Also disconnect all other electrical equipment that comes into contact with the water if you have to work in the pond.
- No electric cables may run in the greenhouse aisles.
- The solar system battery boxes must always be kept closed.

SECURITY

- Any repair must be carried out by myfood, or by an authorised repair centre, which has the required tools at disposal.
- The water temperature should be +35°C at most.
- The greenhouse must be professionally connected to the main socket outlet.
- Do not run the pump without water
- Never unscrew or open the electronic box.
- Never leave a child alone in the greenhouse as there is a risk of drowning. If necessary, ensure that locks are installed on the greenhouse doors.
- Never leave flammable objects or materials within 50 cm of the pellet stove.
- Note that the sensors are very sensitive to shocks, it is imperative to handle them with care.

RESPONSIBILITY

Aquaponics ecosystem is delicate and requires maintenance. Care must be taken to monitor parameters to limit these risks. If the system is not properly maintained the risks may be as follows:

- Plants may show signs of disease, grow slowly, die or even die.
- Fish may also show signs of weakening or even die.

Please note that Myfood cannot be held responsible for any of the above risks. Myfood is committed in providing Pioneer Citizens all the information and support necessary to resolve identified issues.

SAFETY

INSTRUCTION 2/2

WARRANTY CONDITIONS

- The product is under legal and commercial warranty. The greenhouse is covered by a **12-year** degressive guarantee against manufacturing defects.
- On moving parts, such as door wheels and hinges, we offer a degressive **2-year** warranty.
- We replace free of charge any part that does not correspond to the standard standards.
 - This warranty includes all damages caused by material and workmanship defects. This warranty is attributed to the original owner and is not transferable.
 - This warranty excludes all damage caused by faulty and irresponsible use or damage caused by exceptional natural phenomena.
- The guarantee is not valid on the glazing.
- The aquaponic system (tank, structure, ZipGrow towers, electronic components) is covered by a **2-year** legal and commercial warranty.

WASTE REMOVAL

Disposal of used electrical appliances in private households in the European Union. Electrical/electronic components may not be added to ordinary waste and must be disposed of separately. It is your responsibility to take these devices to the appropriate disposal site for environmentally friendly destruction and/ or recycling.

CYCLING OF WATER

CARBONATE BUFFER REDUCTION

TO ALLOW STABILIZATION OF ACIDITY OF WATER IN TANKS.

END OF THE GREENHOUSE INSTALLATION

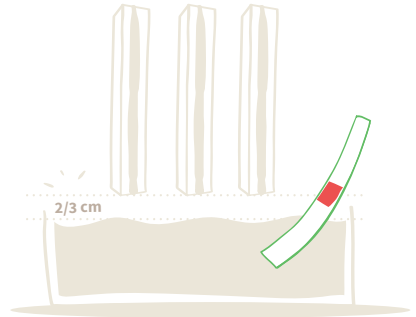
DAY 1

FILL THE TANKS

with a source of available water (preferably rain or water osmosis, otherwise tap water)

TEST STRIP TO DETERMINE THE VALUE OF KH

(= reading the hardness of water related to carbonates)



HABITUALLY,
THE VALUE OF
KH IS INCLUDED

between
4° and 5°

TO INCREASE 1 DEGREES OF KH :

Add potassium bicarbonate (teaspoon)



x3

(with fish : x1)



x12

(with fish : x3)

TO LOWER KH :

Fill the basins with **2/3** rainwater or reverse osmosis water and **1/3** tap water.



DAY 2

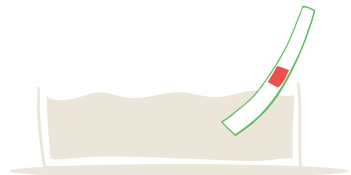
CHECK THE KH VALUE WITH A TEST STRIP

While **KH > 6°**

Adjust KH according to the protocol

If **KH = 5°**

Pour 50mL of phosphoric acid (pH Down) each day as long as pH > 7



CYCLING OF WATER

ACTIVATION OF THE BIOLOGICAL FILTER FOR A TRANSFORMATION OF THE ORGANIC ELEMENTS IN NUTRIENTS ASSIMILABLE FOR PLANTS.

Day 1

ADD AMMONIA SULPHATE

Once diluted, distribute it equitably in the tanks



8g
(CITY)



50g
(FAMILY)

ADD THE IRON CHELATE (teaspoon)

To fight against opportunistic algae



ADD NITRIFYING BACTERIA

Allows faster cycling



lukewarm water



CHECK THE PRESENCE OF NITRATES (NO₃⁻)

with the strips and add the sulphate ammonia



If no nitrite (NO₂⁻) then the cycling is finished. Otherwise it is necessary to wait before going further.

+2 weeks



AQUAPONICS

- + Add supplements of potassium, magnesium, calcium + trace elements (see dosing sheet)
- + Add the plants
- + Then introduce 40 fish (if the nitrates <150mg/L otherwise wait)



BIOPONICS

- + Add GROW and BLOOM fertilizer
- + Add the plants



43 Route Ecospace Parc d'Activité Ecoparc
67120 Molsheim
myfood.eu